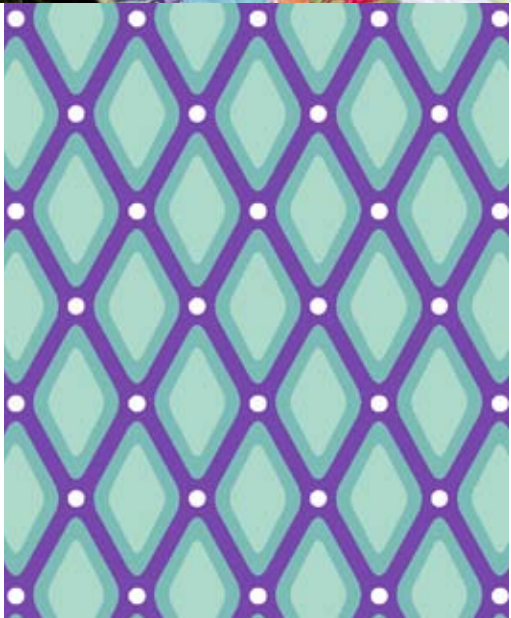




Topiary Tiles

A complimentary design by Amanda Murphy,
brought to you by Robert Kaufman Fabrics.



© 2011 Amanda Murphy

AMANDA *AK* MURPHY



Topiary Tiles

Designed and pieced by Amanda Murphy;
Quilted by Kay Giese

67-1/2" x 93-1/2"

All Fabrics in the quilt shown are from the Veranda collection by Amanda Murphy for Robert Kaufman Fabrics.

<http://www.amandamurphydesign.com>

<http://amandamurphydesign.blogspot.com>

© 2011 Amanda Murphy. This complimentary pattern is for personal use only. Please feel free to share it with your friends, but the sale of this pattern or skirts made from it is not permitted. Thanks!

Materials

- 1 Veranda 10"-Square
- 1 Veranda Roll-Up
- 7/8 yard dark pink tile print for inner border (AAM-11500-239)
- 1-3/4 yard white on white dotted print for sashing (AAM-11492)
- 3/4 yard striped print for straight grain binding or 1-1/8 yard for bias binding (AAM-11490-239)
- 6 yards any coordinating Veranda print for backing

Cutting

Cut 10 (2-1/2") strips from dark pink tile print. From strips, piece 2 (2-1/2" x 58-1/2") rectangles and 2 (2-1/2" x 80-1/2") rectangles.

Cut 21 (2-1/2") strips from white dotted print. From strips, cut 18 (2-1/2" x 11") rectangles. Set remainder of strips aside.

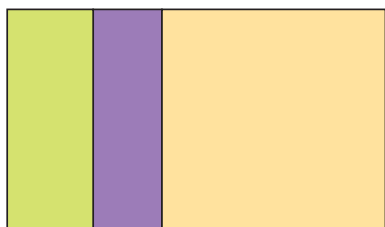
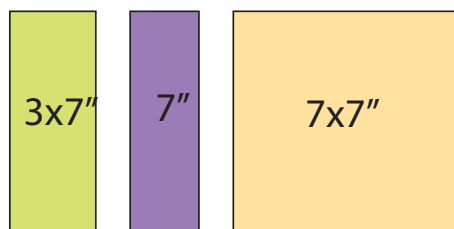
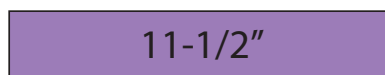
Unit Assembly

1. Set aside a white ten square to use for the appliqué flowers in the corner squares. Set aside one ten square to use for corner back-grounds. (I used the avocado radiating dots.) Cut that square into 4 (5") squares. Set aside.
2. Stack 2 of your ten squares together and cut into 1 (10" x 3") rectangle and 1 (10" x 7") rectangle. Turn 90 degrees and slice again to yield 1 (3"square, 2 (3" x 7") rectangles, and 1 (7") square. "Shuffle" your pieces so that you that (3") and (3" x 7") matching pieces are paired with a contrasting (7") square. Repeat 11 times until you have 24 sets. Set aside.
3. Cut 24 of your roll-up strips into 1 (11-1/2") segment, 1 (7") segment, 1 (3") segment, and 3 (5") segments per strip. Set the 5" segments aside to use for the coin border.





4. Pair a contrasting set of roll-up strips (11-1/2", 7", and 3") with a set from your ten squares, as shown in the diagram on the upper right. (You should be using three different fabrics.) Join your 3" rollup piece to your (3") square on one side and a matching (3" x 7") piece on the other. Join your 7" rollup piece to the other (3" x 7") rectangle on one side and the contrasting (7") square on the other, as shown in the diagram below. Join one of those units onto the (11-1/2") rollup piece. Join the other unit to the other side of your (11-1/2") rollup piece. Repeat until you have 24 (11-1/2") blocks.

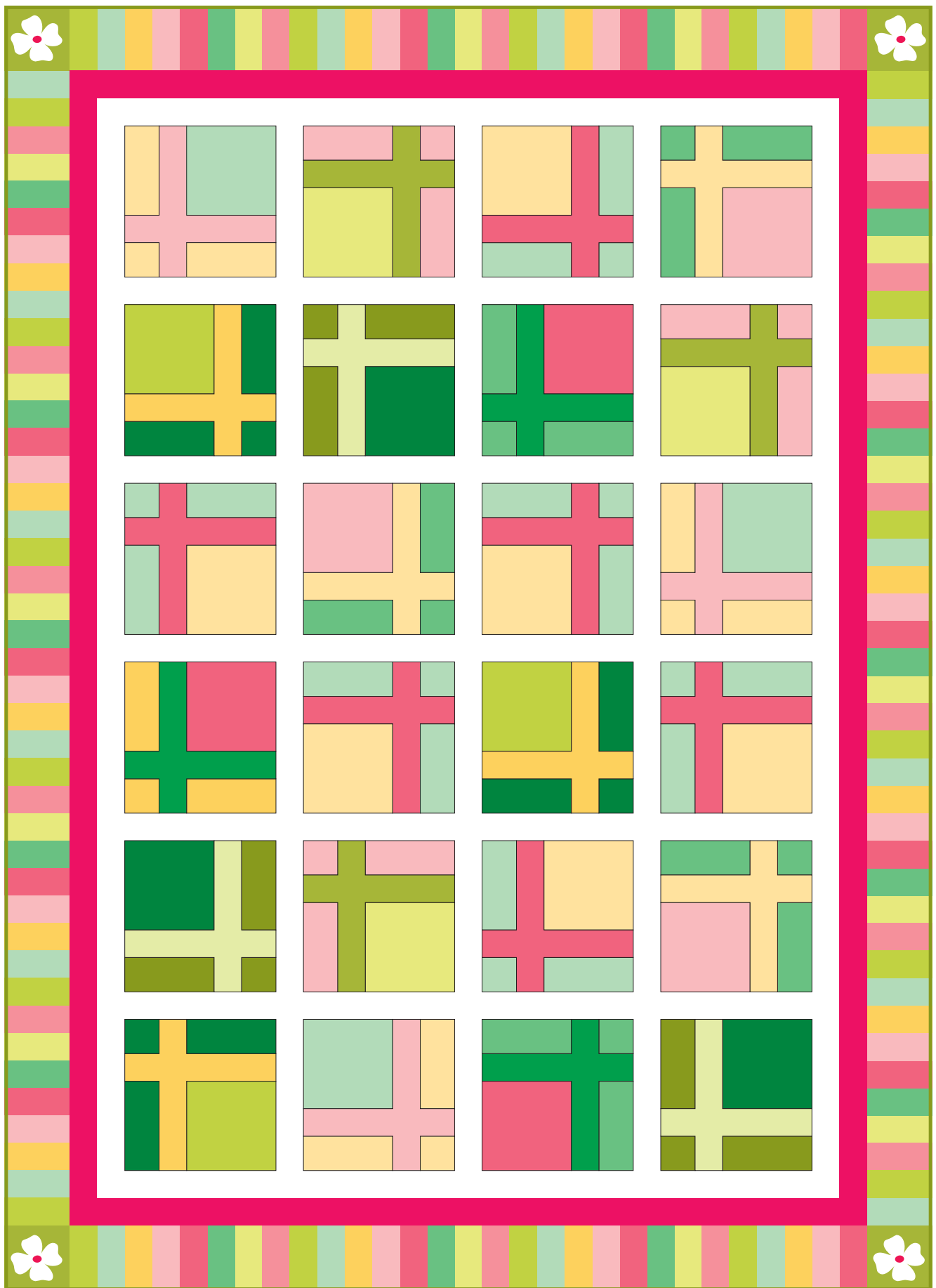


Quilt Assembly

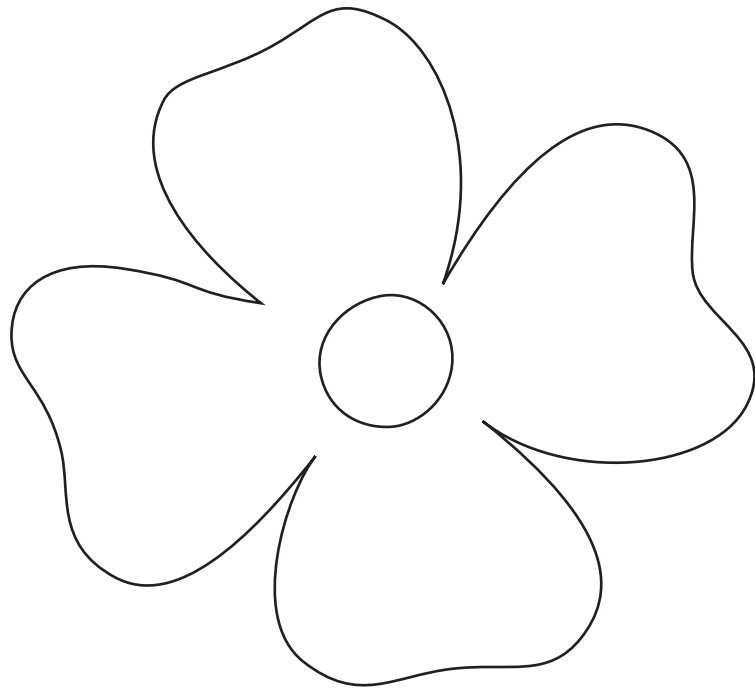
1. Assemble quilt rows as shown in **Quilt Assembly Diagram** on the following page, alternating 3 (2-1/2" x 11-1/2") white rectangles with 4 quilt blocks. Piece 7 (50-1/2" x 2-1/2") rectangles and 2 (2-1/2" x 80-1/2") rectangles and from remaining 15 white strips. Join rows, inserting a (50-1/2" x 2-1/2") white sashing strip between each row, and adding an additional sashing strip to the top and bottom of the quilt top. Join (2-1/2" x 80-1/2") rectangles to the sides of the quilt top.
2. Join the (2-1/2" x 80-1/2") pink tile rectangles to the sides of the quilt top. Join the 2 (2-1/2" x 58-1/2") pink tile rectangles to the top and bottom of the quilt top.
3. Cut 70 additional 5" pieces from the remainder of the roll-up strips. Take all (5") pieces and sew 42 units together to get one side border strip. Repeat. Join both units to sides of quilt top.
4. Now sew 29 (5") units together to form the top border strip. Appliqué a flower shape from your extra white fabric onto each (5") corner square that you set aside for this purpose. Appliqué a circle of your chosen print on each to serve as the flower center. Sew a flower unit to each side of your top border. Join to quilt top. Repeat to assemble bottom border and attach.

Finishing

1. Divide backing fabric into two lengths. Cut 1 piece lengthwise to make 2 narrow panels. Join 1 narrow panel to each side of wide panel. Press.
2. Layer backing, batting, and quilt top. Quilt as desired.
3. Join the (2-1/4") green medallion strips into 1 continuous piece for binding. Press, folding in half lengthwise. Sew binding to quilt.



Quilt Assembly Diagram



Appliqué Flower